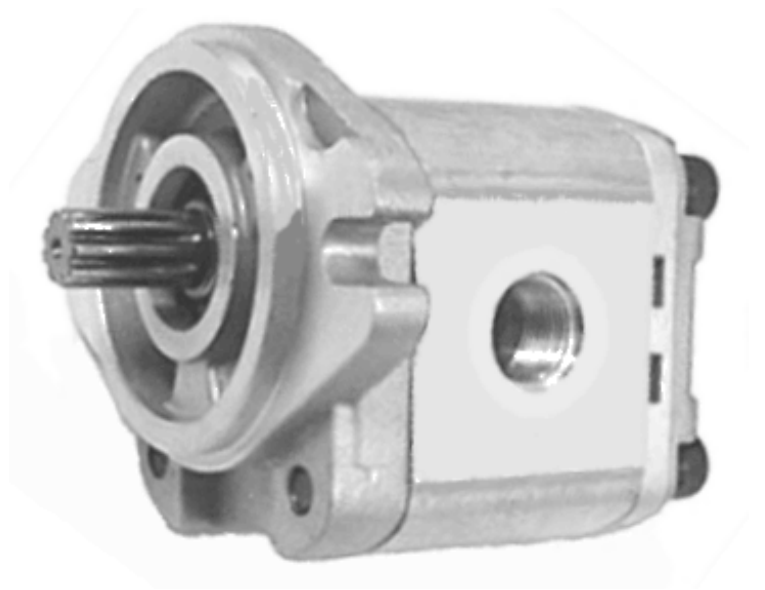
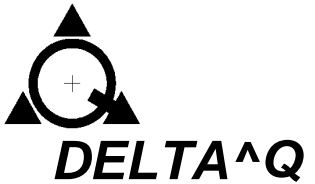


SALES AND APPLICATION



SP16A SERIES SINGLE GEAR PUMPS

Plant Location and Mailing Address
10827 Tower Oaks Blvd
Houston, TX 77070

Visit our web site www.deltaq.com
email us at info@deltaq.com
281 807 1840 Phone or 800 650 3110 Phone
281 807 4815 Fax

S&ASP16A.005

Warranty Policy:

Providing Purchaser notifies us promptly, if within 12 months from date of shipment to you, or prior to 2,000 hours of use, whichever shall first occur, equipment or parts manufactured by us fail to function properly under normal and proper use because of defects in material or workmanship demonstrated to our satisfaction to have existed at the time of delivery, the Company, reserving the right to either inspect them in your hands or request their return to us, will at our option repair or replace at our expense F.O.B. our factory, or give you proper credit for such equipment or parts determined by us to be defective, if returned transportation pre-paid by Purchaser. The foregoing shall not apply to equipment that shall have been altered or repaired after shipment to you by anyone except our authorized employees, and the Company will not be liable in any event for alterations or repairs except those made with its written consent Purchaser shall be solely responsible for determining suitability for use and the Company shall in no event be liable in this respect. The equipment or parts manufactured by others but furnished by us will be repaired or replaced only to the extent of the original manufacturer's guarantee.

THE FOREGOING OBLIGATIONS ARE IN LIEU OF ALL OTHER OBLIGATIONS AND LIABILITIES INCLUDING NEGLIGENCE AND ALL WARRANTIES, OR MERCHANTABILITY OR OTHERWISE EXPRESS OR IMPLIED IN FACT OR BY LAW, AND STATE OUR ENTIRE AND EXCLUSIVE LIABILITY AND BUYER'S EXCLUSIVE REMEDY FOR ANY CLAIM OR DAMAGES IN CONNECTION WITH THE SALE OR FURNISHINGS OR GOODS OR PARTS, THEIR DESIGN, SUITABILITY FOR USE, INSTALLATION OR OPERATION, WE WILL IN NO EVENT BE LIABLE FOR ANY DIRECT, INDIRECT, SPECIAL, INCIDENTAL OR CONSEQUENTIAL DAMAGES WHATSOEVER, AND OUR LIABILITY UNDER NO CIRCUMSTANCES WILL EXCEED THE CONTRACT PRICE FOR THE GOODS FOR WHICH LIABILITY IS CLAIMED.

DISCLAIMER:

SPECIFICATIONS, DESCRIPTIONS AND ILLUSTRATIONS SHOWN HEREIN WERE ACCURATE AT THE TIME OF PRINTING. **DELTA[^]Q** RESERVES THE RIGHT TO CHANGE SPECIFICATIONS, MATERIALS OR DESIGNS WITHOUT NOTICE AND WITHOUT INCURRING OBLIGATION.

OPTIONAL EQUIPMENT MAY ADD COST TO THE BASIC UNIT, AND SOME OPTIONS ARE ONLY AVAILABLE IN COMBINATION WITH CERTAIN MODELS OR OTHER OPTIONS.

FEATURES:

- DISPLACEMENTS 0.24 TO 2.02 IN³
- ONE PIECE SHAFT AND GEAR ASSEMBLY
- SAE "A" MOUNTING
- CLOCKWISE AND CCLOCKWISE ROTATION AVAILABLE
- HIGH VOLUMETRIC EFFICIENCY THROUGH INNOVATIVE PRESSURE PLATE DESIGN
- HEAVY DUTY STEEL BACKED SHAFT BEARINGS
- EXTRUDED ALUMINUM BODY
- ALUMINUM END COVER AND MOUNTING FLANGE
- PRESSURE TO 3500 PSI CONTINUOUS, 4200 PSI INTERMITTENT
- 4000 RPM STANDARD
- DOUBLE LIP SHAFT SEAL
- PUMPS 100% TESTED
- SIDE AND REAR PORTS

DELTA[^]Q

S&ASP16A005

ORDERING CODE:

SP16A	11	R	U	7	A
SERIES	DISPL	ROTATION	PORT	SHAFT	MOUNTING

SERIES:

SP16A EXTERNAL GEAR PUMP

DISPLACEMENT: IN³

04 - 0.24 16 - 1.00
 06 - 0.38 19 - 1.17
 08 - 0.51 22 - 1.37
 11 - 0.67 25 - 1.53
 14 - 0.87 33 - 2.02

ROTATION:

R - CLOCKWISE
 L - CCLOCKWISE

PORT:

U - SIDE, O-RING, 1 1/16-12 INLET, 7/8-14 OUTLET THRU MODEL 22. 1 5/16-12 INLET, 1 1/16-12 OUTLET ON MODELS 25 AND 33
 B - REAR, O-RING SAE 1 5/16-12 THD INLET, SAE 1 1/16-12 THD OUTLET.

SHAFT:

1 - SAE "A" KEY, 0.625 DIA PD FACTOR = 3600(NOT AVAILABLE ON MODEL 33)
 7 - SAE "A" SPLINE, 9T 0.625 DIA PD FACTOR = 3600 PD FACTOR = PRESSURExDISPLACEMENT

MOUNTING:

A - SAE "A" 2 BOLT 3.250" PILOT

TECHNICAL DATA: **RPM LIMITED ON SOME MODELS WITH REAR PORTS *SEE SHAFTS FOR PSI LIMITS

MODEL	DISPLACEMENT		*PRESSURE		**RPM	WEIGHT LBS
	CM ³ /REV	IN ³ /REV	CONTINUOUS	MAX		
SP16A04	4.0	0.24	3500	4200	600-4000	5.1
SP16A06	6.2	0.38	3500	4200	600-4000	5.4
SP16A08	8.4	0.51	3500	4200	600-4000	5.6
SP16A11	11.0	0.67	3500	4200	600-4000	6.0
SP16A14	14.3	0.87	3500	4200	600-4000	6.2
SP16A16	16.5	1.00	3500	4200	600-4000	6.4
SP16A19	19.2	1.17	3500	4200	600-4000	6.9
SP16A22	22.5	1.37	3000	4000	600-4000	7.2
SP16A25	25.0	1.53	3000	4000	600-4000	7.4
SP16A33	33.0	2.02	3000	4000	600-4000	7.9

HYDRAULIC FLUID:

THE SP16A SERIES PUMP SHOULD BE USED WITH GOOD QUALITY, PETROLEUM OIL BASED, ANTI-WEAR HYDRAULIC FLUIDS.

VISCOSITY RANGE:

45 TO 2500 SUS RECOMMENDED.
 OPTIMUM 165 SUS @ 100°F 52 SUS @ 180°F

TEMPERATURE RANGE:

MINIMUM -5°F
 MAXIMUM 180°F

FILTRATION:

FOR THE BEST RESULTS THE FLUID SHOULD MEET ISO CLEANLINESS OF 18/15.
 FILTER SHOULD HAVE A BETA 20>75 RATING.

INLET PRESSURE:

MINIMUM 5 INCHES hg
 MAXIMUM 25 PSI

DRIVE CONNECTION:

FLEXIBLE COUPLING

ROTATION:

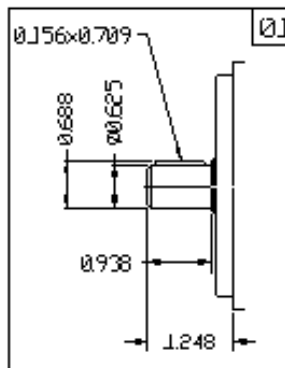
CW OR CCW AS VIEWED FROM THE SHAFT END, MUST SPECIFY, NOT BI-ROTATIONAL.

MOUNTING POSITION:

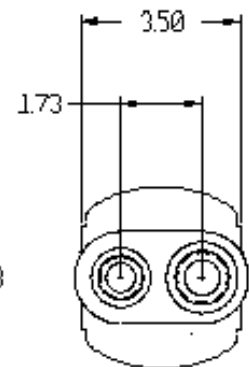
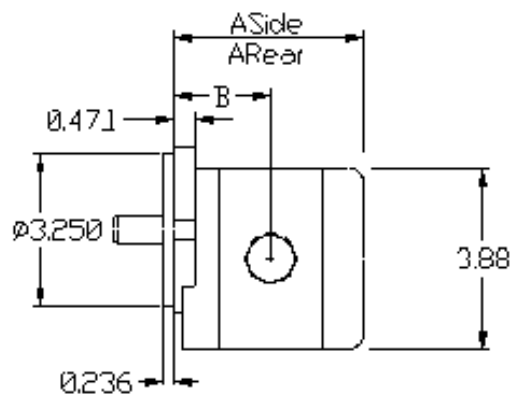
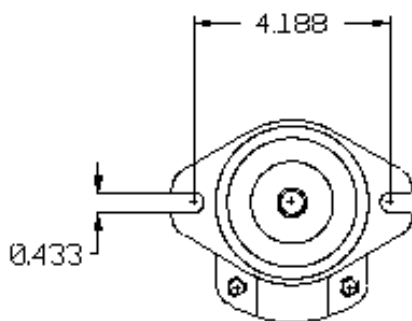
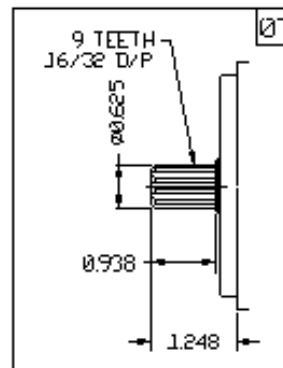
NO RESTRICTION

MODEL	DIMENSIONS (INCH)			SIDE PORTS SAE O-RING	REAR PORTS SAE O-RING
	ASide	ARear	B		
SP16A04	3.85	4.32	1.93	#12 1 1/16-12 INLET #10 7/8-14 OUTLET	#16 1 5/16-12 INLET #12 1 1/16-12 OUTLET
SP16A06	4.00	4.47	2.00		
SP16A08	4.14	4.49	2.07		
SP16A11	4.31	4.66	2.16		
SP16A14	4.53	4.88	2.27		
SP16A16	4.68	5.04	2.34		
SP16A19	4.85	5.31	2.42		
SP16A22	5.06	5.53	2.53		
SP16A25	5.24	5.71	2.62	#16 1 5/16-12 INLET #12 1 1/16-12 OUTLET	#16 1 5/16-12 INLET #12 1 1/16-12 OUTLET
SP16A33	5.36	5.83	2.68		

PD FACTOR = 3600

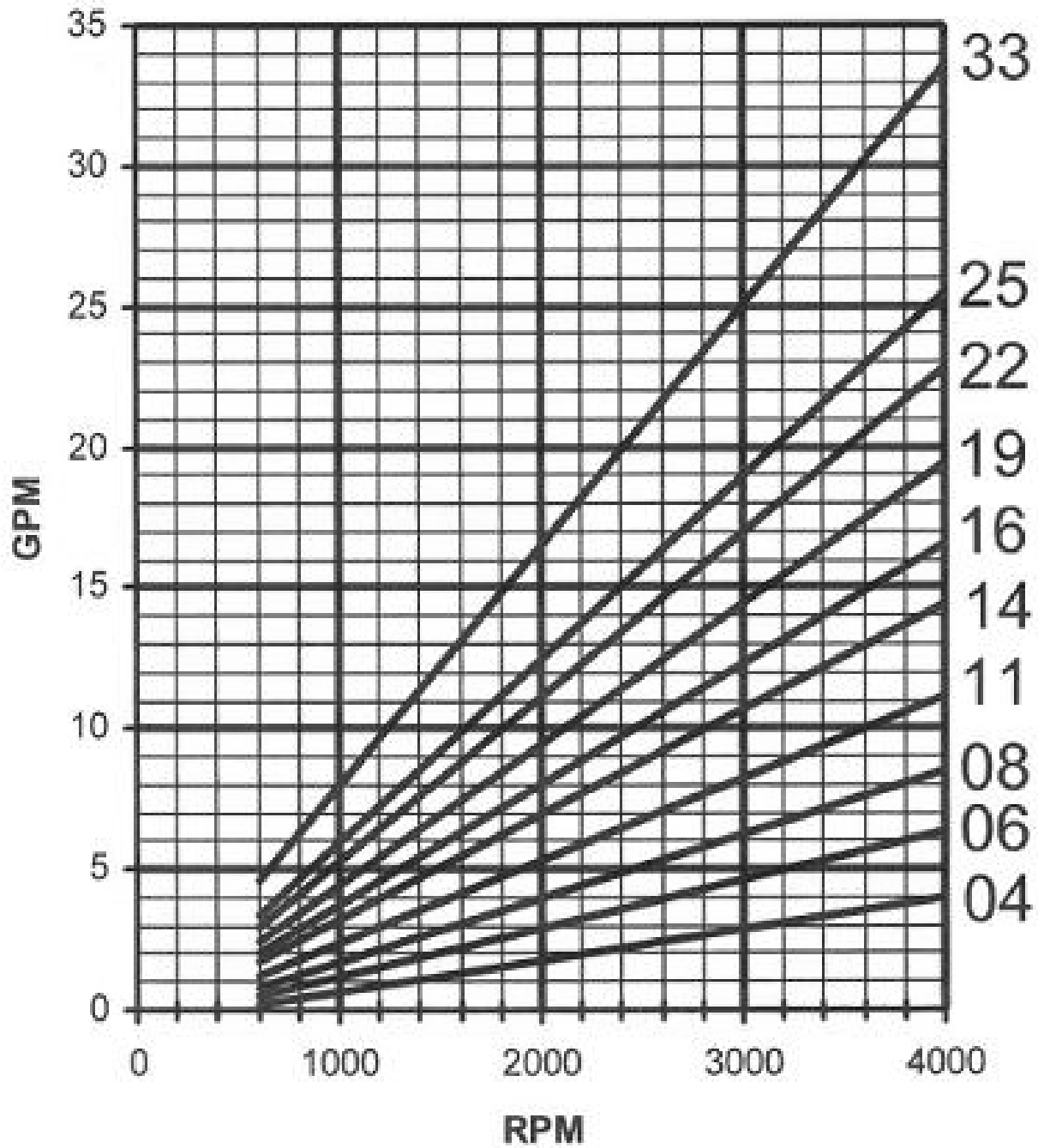


PD FACTOR = 3600



REAR PORT OPTION

Output Flow, SP16A



Input Horsepower, SP16A

